



- ★ Corporate Office
- Sales Office
- Dealer Outlet
- Manufacturing Plant

#### AFTER SALES SUPPORT

LiuGong has a strong network of sales & services offices at key locations in India. Our dealer guarantees timely support and maintenance of machine service round the clock.

#### CREATED IN INDIA. CREATED TO LAST.

Tapping the global market, LiuGong announced its first overseas expansion with an estimated capital of Rs. 30 millions in the form of setting up a manufacturing base in India in 2009. With a sprawling 177,000 square meters lush green campus, LiuGong established a full-fledged manufacturing plant at Pithampur near Indore, often called as "Detroit of India" and the home of many international companies. The facility has a capacity of manufacturing 3000 equipments in a year.

The company supports the product lines with a growing network of more than 18 dealers and strategically located 55 touch points in 29 states. LiuGong fully supports the customers with a complete range of reliable construction machinery, through a wide range of network and strong after sales support.

**Engine**  
C490BPG BSIII

**Power**  
50HP (36.8KW)

**Capacity**  
3T @ 500mm

**Transmission**  
Automatic

## CPCD30 DIESEL FORKIFT **LIUGONG**



Always a LiuGong dealer near you.



Corporate Office:  
82, Okhla Phase III, New Delhi- 110020, Tel: 011-47272200  
marketing-india@liugong.com

Manufacturing Plant:  
Plot No. 163, Industrial Area, Sector-III, Pithampur  
Dist.- Dhar, Madhya Pradesh- 454774, Tel: 07292-416700

[www.liugong.com/en\\_in](http://www.liugong.com/en_in)



06/2017 Designed by LiuGong India

The LiuGong series of logos herein, including but not limited to word marks, device marks, letter of alphabet marks and combination marks, as the registered trademarks of Guangxi Liugong Group Co., Ltd. are used by Guangxi Liugong Machinery Co., Ltd. with legal permission, and shall not be used without permission. Specifications and designs are subject to change without notice. Machines shown may include optional equipment and may not include all standard equipment. Like and follow us.

**TOUGH WORLD. TOUGH EQUIPMENT.**



## DESIGNED TO GET MORE DONE



### 1 Clear View Mast

Operator can easily see the fork

### 2 Enhanced Radiator

Optimised for extreme hot conditions

### 3 Double Air Filter

Air cleaner for the engine.

### Auxiliary Coolant Tank

Coolant loss will be minimized in hot weather.

### Extra Water Separator

Designed for Indian conditions

### Easy Maintenance

85° opening angle ensures convenient maintenance.

## ALL AROUND COMFORT



### 4 Skidproof Step

Big size platform makes operator get in the forklift easily and safely.



### 5 Movable Suspension Seat

Comfortable for long working operation



### 6 Ample foot Space

Spacious Leg Room



### 7 Adjustable Steering Column

Steering can be adjusted according to operators need.



### 8 Modern Dashboard

User friendly panel.



### 9 Clear View Overhead Guard

Strong & Safe



### 10 Inching Pedal

Smooth & precise movement



### 11 Wide Tire

More stable, more traction, longer life.



### 12 Vertical Exhaust

Waste gas goes up into the sky directly, without being inhaled by operator



### 13 Enhanced Steering Axle

Designed for heavy duty, long life.



### 14 Optimized Gearbox Position

The design of LiuGong gearbox integrated in engine, helps in easy maintenance

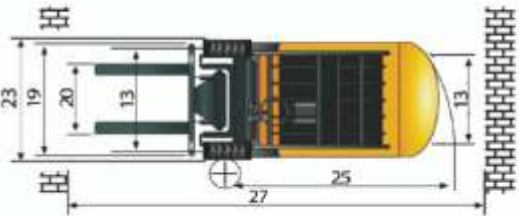
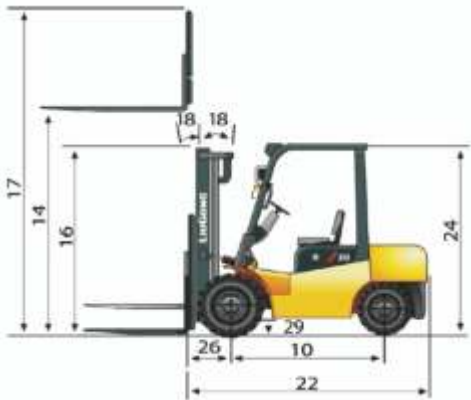


### 15 Radiator Cover

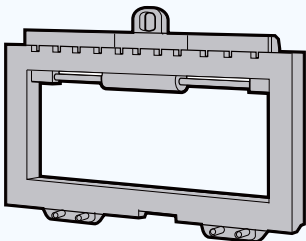
Easy inspection and quick coolant refill



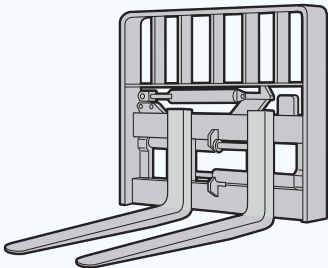
General	1	Model			CPCD30	CPCD30
	2	Power Type			Diesel	Diesel
	3	Mast Type			Duplex 3.0m	Triplex 4.5m
	4	Standard Load Center		mm	500	500
Weights	5	Service Weight	unloaded	kg	4,230	4,440
	6	Axle Load	loaded / unloaded, front	kg	6,370 / 1,660	6,690 / 1,920
	7		loaded / unloaded, rear	kg	860 / 2,570	750 / 2,520
Tires	8	Tire Type			Pneumatic(Standard) / Solid(Optional)	
	9	Wheels	front / rear		2 / 2	2 / 2
	10	Wheelbase		mm	1,700	1,700
	11	Tire Size	front		28×9-15-12PR	28×9-15-12PR
	12		rear		6.50-10-10PR	6.50-10-10PR
	13	Tread Width	front / rear		1,000 / 980	1,000 / 980
Mast	14	Max. Fork Height		mm	3,000	4,500
	15	Free Lift		mm	145	964
	16	Height, Upright Lowered		mm	2,080	2,120
	17	Height, Upright Extended		mm	4,146	5,620
	18	Mast Tilt	Forward / Back	deg	6° / 12°	6° / 6°
	19	Carriage	width / class	mm	1,100 / 3A	1,100 / 3A
	20	Fork Spread	minimum / maximum	mm	272 / 1,072	272 / 1,072
	21	Fork Dimensions	TxWxL	mm	45 x 122 x 1,070	45 x 122 x 1,070
Chassis	22	Length to Fork Face		mm	2,705	2,705
	23	Overall Width		mm	1,225	1,225
	24	Overhead Guard Height		mm	2,125	2,125
	25	Turning Radius	minimum outside	mm	2,400	2,400
	26	Fork Overhang		mm	471	490
	27	Right Angle Stack	add load length and clearance	mm	4,141	4,145
	28	Ground Clearance	minimum loaded	mm	135	135
	29		center of wheelbase	mm	140	140
Performance	30	Travel Speed	loaded / unloaded	km/h	18.5 / 19	18.5 / 19
	31	Lift Speed	loaded / unloaded	m/s	0.43 / 0.45	0.43 / 0.45
	32	Lower Speed	loaded / unloaded	m/s	0.46 / 0.4	0.46 / 0.4
	33	Max. Drawbar Pull	loaded	kg	1,650	1,650
	34	Max. Gradeability	loaded / unloaded	%	18 / 20	18 / 20
Systems	35	Brakes	service		Foot / Hyd	Foot / Hyd
	36		parking		Hand / Mech	Hand / Mech
	37		manufacturer		Xinchai	Xinchai
	38	Engine	model		C490BPG	C490BPG
	39		emission compliance		Indian BS III	Indian BS III
	40		cylinders		4	4
	41		displacement	liters	2.67	2.67
	42		rated power	hp/rpm	50 / 2,650	50 / 2,650
	43		Max. torque	N • m/rpm	148 / 1,700~1,900	148 / 1,700~1,900



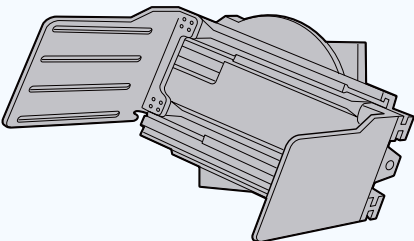
FEATURES TO ENHANCE YOUR PRODUCTIVITY



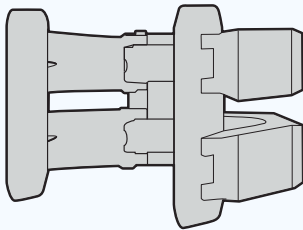
Sideshifter



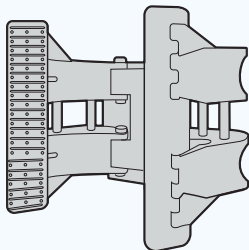
Fork Positioner



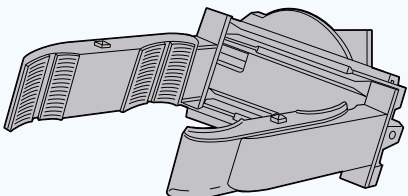
Bale Clamp



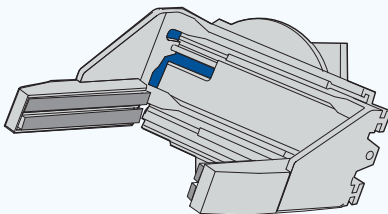
Paper Roll Clamp



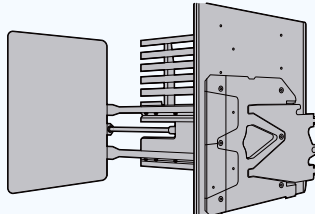
Tyre Clamp



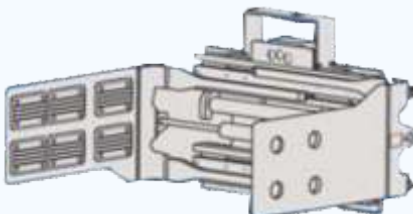
Drum Clamp



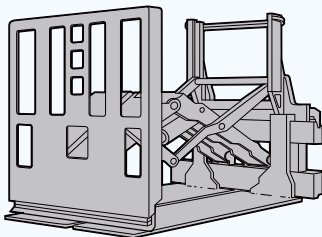
Block Clamp



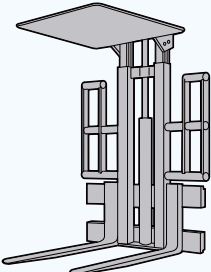
Carton Clamp



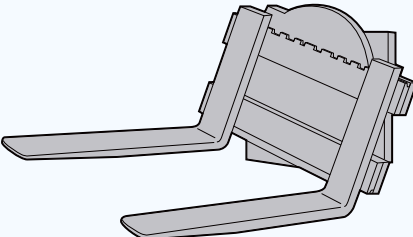
Tobacco Carton Clamp



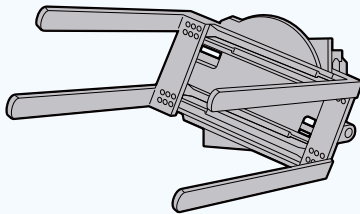
Push / Pull



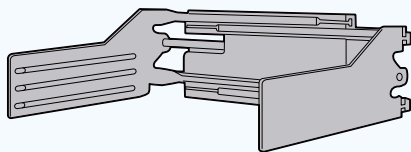
Load Stabilizer



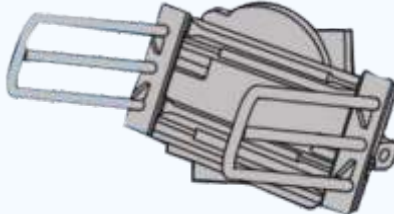
Rotator



Turnload



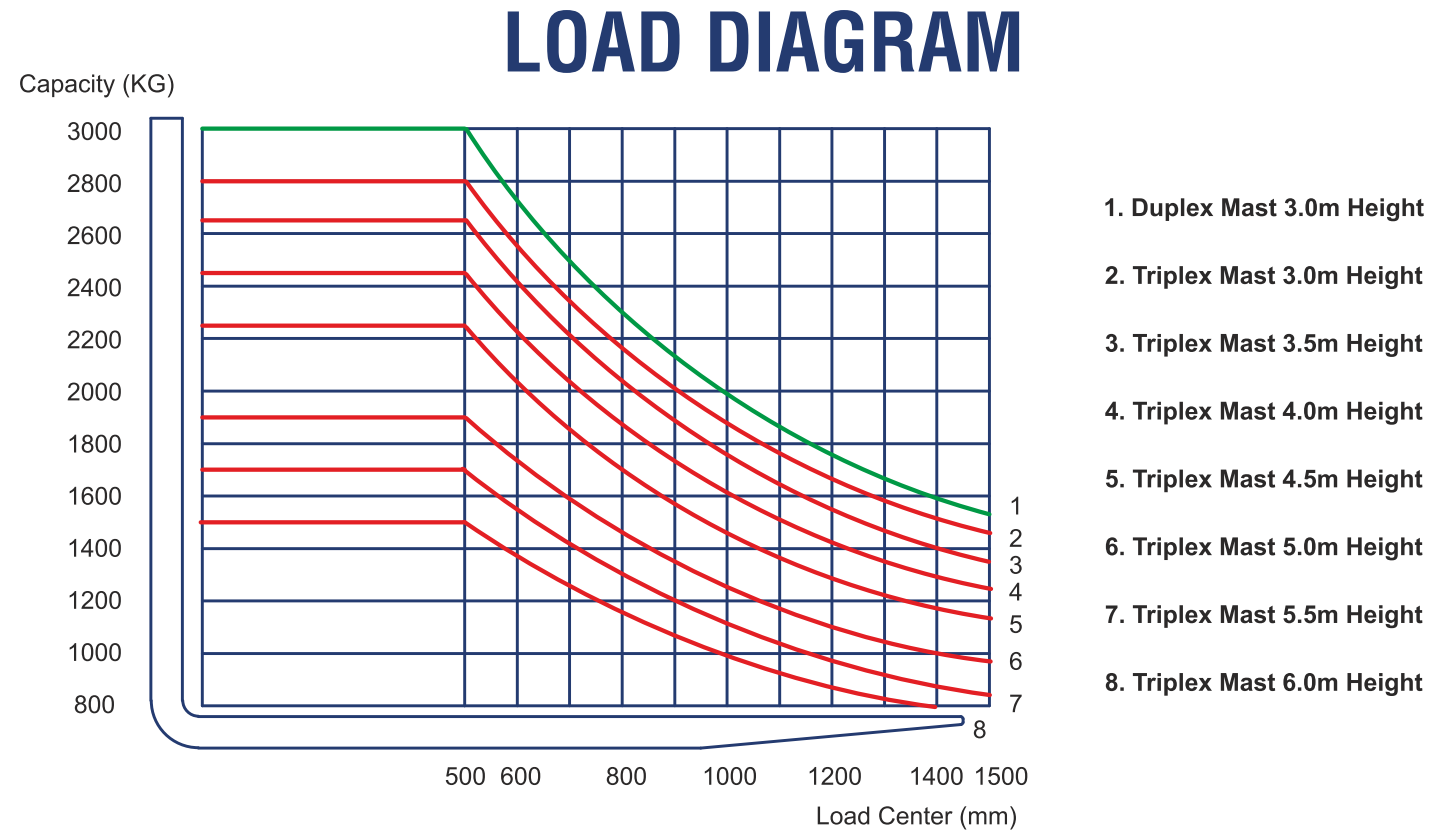
Pulp Bale Clamp



Foam Rubber Clamp



LiuGong Forklift are easy to acquire, easy to maintain and we are easy to do business, coupled with our professional distribution network and supported by our parts department at “Pithampur, Indore MP. LiuGong forklifts offers exceptional value in Indian market.



## About LiuGong Machinery Co., Ltd.

LiuGong is committed to world-class quality and engineering. LiuGong has over 8,000 employees, 300 dealers, 20 manufacturing facilities, 10 regional parts depots and 12 strategically placed subsidiary offices worldwide. This means that whenever and wherever you need it, you can count on our full after sales support. LiuGong machines are easy to own, easy to operate and easy to maintain.



**CREATING  
A WORLD OF OPPORTUNITIES**

## About LiuZhou LiuGong Forklift Co., Ltd.

Liuzhou LiuGong Forklift Co., Ltd., owned by LiuGong Machinery Co., Ltd., is a professional forklift manufacturer. With state of the art R&D and manufacturing facilities, LiuGong can offer internal combustion forklifts, battery forklifts, tractors and warehouse forklifts with multiple international certificate's. LiuGong forklift is top 5 in China and has been exported to more than 100 countries in the world. With high quality and performance as well as global service network, LiuGong forklift is highly praised by customers.